



Citrix Workflow Studio™

Community Tech Preview

Citrix Workflow Studio 1.0 CTP

A Quick Overview



Intro

In a previous series of articles I gave you look at the Partner Tech Preview of Citrix Workflow Studio, which was only available to Citrix Partners. I am very excited to announce that the release of the Community Tech Preview of Citrix Workflow Studio should be available everyone very soon! So while we wait for it to be released, I am going to highlight what has been added to the Citrix Workflow Studio Community Tech Preview that was not in the Partner Tech Preview. Also, I would like people to understand that a Tech Preview is a working product, but by no means is it the final product; it's the feedback from the community that will help make it a product we all will want it to be, which is why it is a preview and not a demo or a beta.

You can view the individual Citrix Workflow Studio Partner Tech Preview articles from the below links:

- [Citrix Workflow Studio - Preview Part 1](#)
- [Citrix Workflow Studio - Preview Part 2](#)
- [Citrix Workflow Studio - Preview Part 3](#)
- [Citrix Workflow Studio - Preview Part 4](#)
- [Citrix Workflow Studio - Preview Part 5](#)
- [Citrix Workflow Studio - Preview Part 6](#)

You can download the complete Citrix Workflow Studio Partner Tech Preview from the below link:

[Introducing Citrix Workflow Studio - The Complete Introduction](#)

Continue to Download: [Citrix Workflow Studio 1.0 Tech Preview – A Quick Overview](#)

What's New about this Release?

The Tech Preview is made available to Citrix authorized partners and customers with the intent of providing an early release of Workflow Studio for evaluation purposes in end-user customer environments. As such, the product should not be run in production environments.

The release period runs through 31 December 2008. An important aspect of this release is an online website where program details, newer versions of the product, additional documentation, and supporting materials will be posted throughout the Tech Preview Program. This site is only open to authorized Citrix partners and customers with a valid mycitrix account and is located at <http://www.citrix.com/WFSinsider>.

During your evaluation, we invite you to provide comments, ask questions, and report technical issues via e-mail at support.WFSinsider@citrix.com.

What's New in the Citrix Workflow Studio Tech Preview?

Workflow Encryption has been added
Workflow Task Libraries have had icon graphics updated
Workflow Task Library for NetScaler has been updated
Workflow Task Library for XenApp has been added
Workflow Task Library for Virtual Machine Manager has been added
Workflow Templates

Known Issues in this Release

Not Intended for Production Use

Citrix highly recommends that you do not deploy and/or use this Tech Preview in a production environment. Citrix will not support such deployments. All support is provided via email as outlined in the Getting Support section above.

Miscellaneous Issues

- Some tasks do not have additional debug statements output when debugging is enabled.
- No "undo" functionality exists to allow you to undo task modification operations.

Workflow Encryption

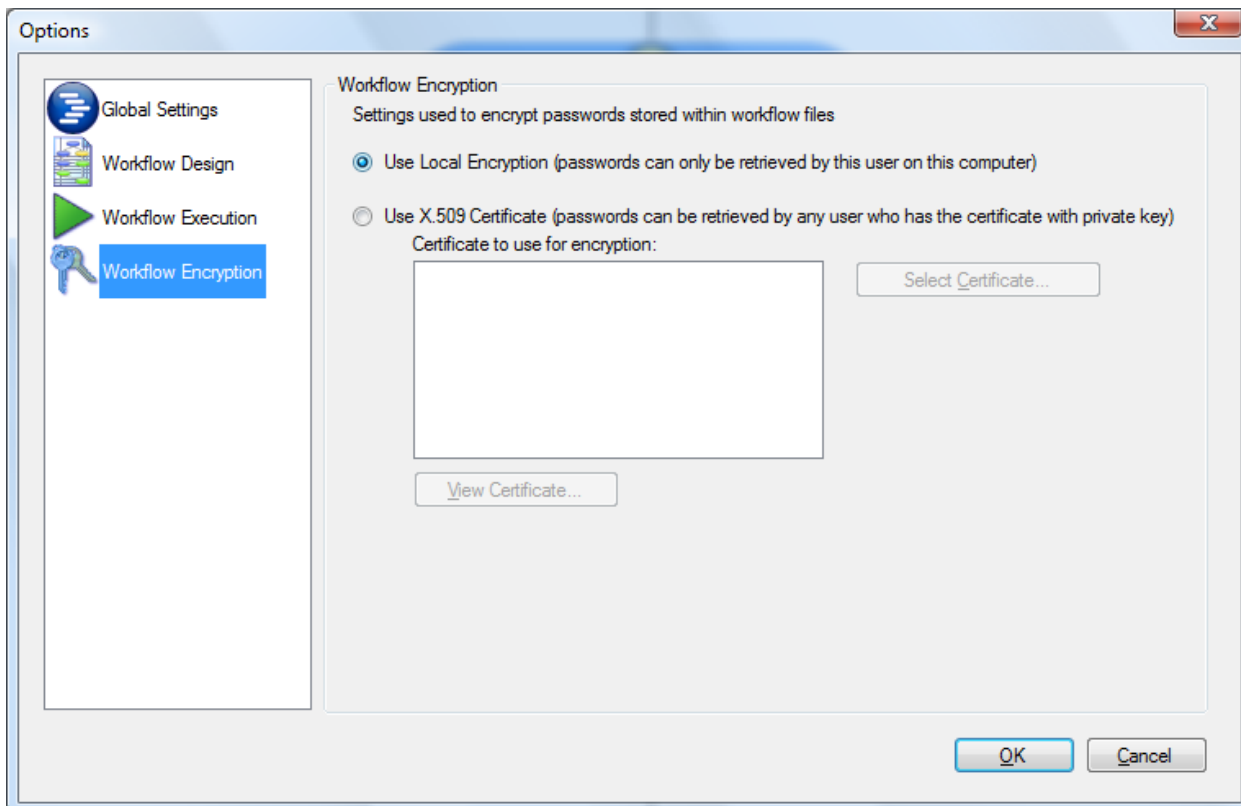
In the Workflow Encryption section of the Options dialog you can select the type of workflow encryption technology you want to use to protect any stored passwords that you may enter in your workflows.

Note: It is not recommended that you use stored passwords in your workflows if possible. This negates the need for configuring the encryption options and removes any complication involved with executing workflows on computers other than the computer where they were created.

If you attempt to run a workflow that has encrypted passwords which you do not have the correct decryption authorization for, you will receive an error for the tasks that have the encrypted passwords. The error will be “The password could not be decrypted”.

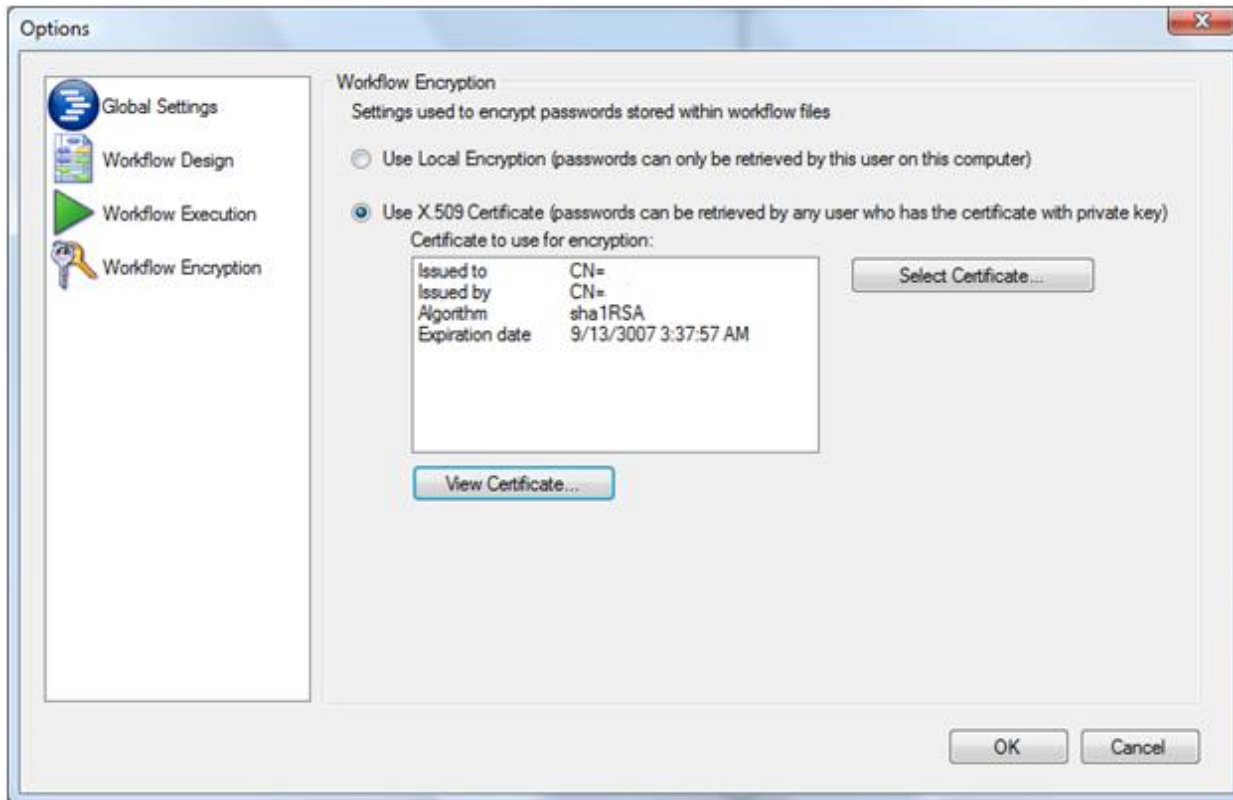
Use Local Encryption

Local encryption uses the Microsoft .NET Framework encryption APIs to encrypt any passwords in the workflow using the current user store. This means that if the workflow has passwords that workflow can only be opened or started and have the passwords decrypted by the same user and computer combination that encrypted the passwords in the workflow.



Use X.509 Certificate

X.509 certificate encryption uses an X.509 certificate to encrypt the passwords in the workflow. The same certificate that is used for the encryption must be used for the decryption. The certificate must include the private key.



Workflow Tasks

The Citrix Workflow Studio product helps you quickly and easily automate data center and business processes by workflow-enabling Windows PowerShell. Using a graphical user interface, you can design workflows that fully automate the following IT processes:

- User account management
- Server and application provisioning
- Security enforcement
- Disaster recovery
- Routine and emergency maintenance on data center resources

Out of the box WFS provides the building blocks you need to build the automation you want. WFS allows you to use building blocks, called tasks, and create workflows that automate daily support and maintenance tasks. For example, you can create workflows that automate the following activities:

- Resetting user passwords
- Provisioning new servers
- Executing general diagnostic tasks

Here are some of the out of the box tasks you can use in your workflows that have been added to the Citrix Workflow Studio Community Tech Preview that were not in the Partner Tech Preview:

- Citrix NetScaler Tasks
- Citrix XenApp Tasks
- Microsoft Virtual Machine Manager Tasks

Citrix NetScaler Tasks

- [-] Citrix
 - [-] NetScaler
 - [-] Configuration
 - [-] Basic
 - Add-NSHTTPService
 - Add-NSServer
 - Clear-NSServiceMonThreshold
 - Disable-NSServer
 - Disable-NSService
 - Enable-NSServer
 - Enable-NSService
 - Get-NSServer
 - Get-NSService
 - Remove-NSServer
 - Remove-NSService
 - Set-NSServiceMonThreshold
 - [-] Load Balancing
 - Add-LBVServer
 - Bind-LBMonitorToService
 - Bind-LBVServerToService
 - Clear-LBMonitorState
 - Disable-LBMonitor
 - Disable-LBVServer
 - Enable-LBMonitor
 - Enable-LBVServer
 - Get-LBMonitor
 - Get-LBVServer
 - Remove-LBVServer
 - Set-LBMonitorRespTimeout
 - Set-LBMonitorState
 - Set-LBVServerIP
 - Unbind-LBMonitorFromService
 - Unbind-LBVServerFromService
 - [-] NS
 - Add-NSIP
 - Disable-NSIP
 - Enable-NSIP
 - Get-NSConfig
 - Get-NSFeature
 - Get-NSHostName
 - Get-NSIP
 - Get-NSMode
 - Get-NSNS
 - Get-NSVersion
 - Remove-NSIP
 - Restart-NS
 - Save-NSConfig
 - Close-NSConnection
 - Initialize-NSConnection
 - [-] Statistics
 - Get-GlobalLBVServerStats
 - Get-LBSEntityStats
 - Get-LBVServerStats
 - Get-NSServiceStats

Citrix XenApp Tasks

- [-] Citrix
 - + NetScaler
 - + Provisioning Server
 - [-] XenApp
 - [-] Applications
 - + Add Server to Application
 - + Disable Application
 - + Enable Application
 - + Get Application Group
 - + Get Application User
 - + Modify Application Group
 - + Modify Application User
 - + Publish Application
 - + Remove Application
 - + Remove Server from Application
 - [-] Servers
 - + Disable Server
 - + Enable Server
 - + Get Hotfix
 - + Get Printer
 - + Connect to Farm
 - + Get Application
 - + Get Group
 - + Get Policy
 - + Get Server
 - + Get User
 - [-] Session
 - + Get Session
 - + Logoff Session

Microsoft Virtual Machine Manager Tasks

- Virtual Machine Manager
 - Advanced Tasks
 - Get-Template
 - Get-VM
 - Get-VMHost
 - Get-VMMServer
 - Move-VM
 - Remove-VM
 - Remove-VMHost
 - Resume-VM
 - SaveState-VM
 - Shutdown-VM
 - Start-VM
 - Stop-VM
 - Suspend-VM
 - Get Virtual Machine
 - Remove Virtual Machine
 - Resume Virtual Machine
 - Save Virtual Machine
 - Start Virtual Machine
 - Stop Virtual Machine
 - Suspend Virtual Machine

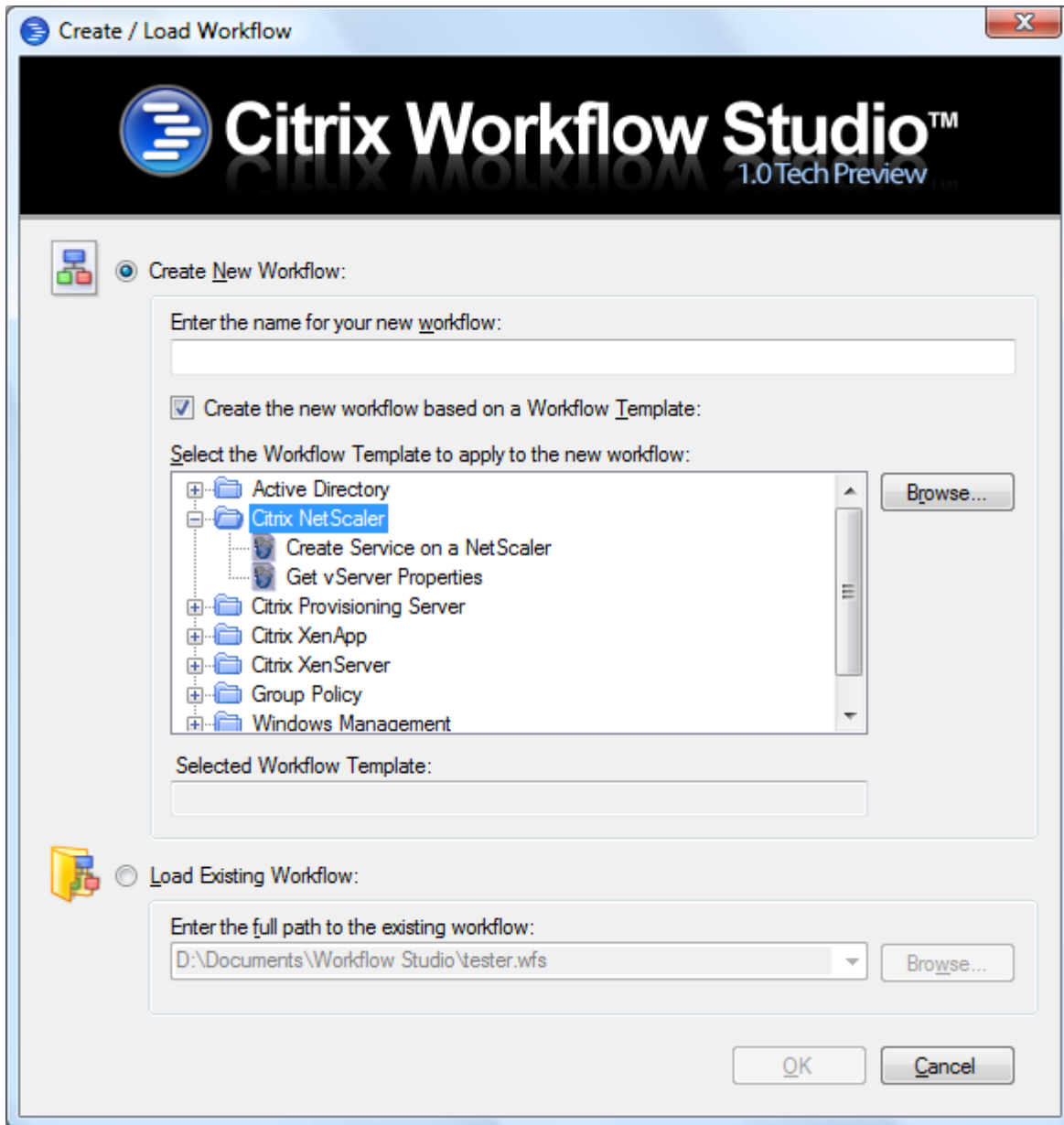
Workflow Templates

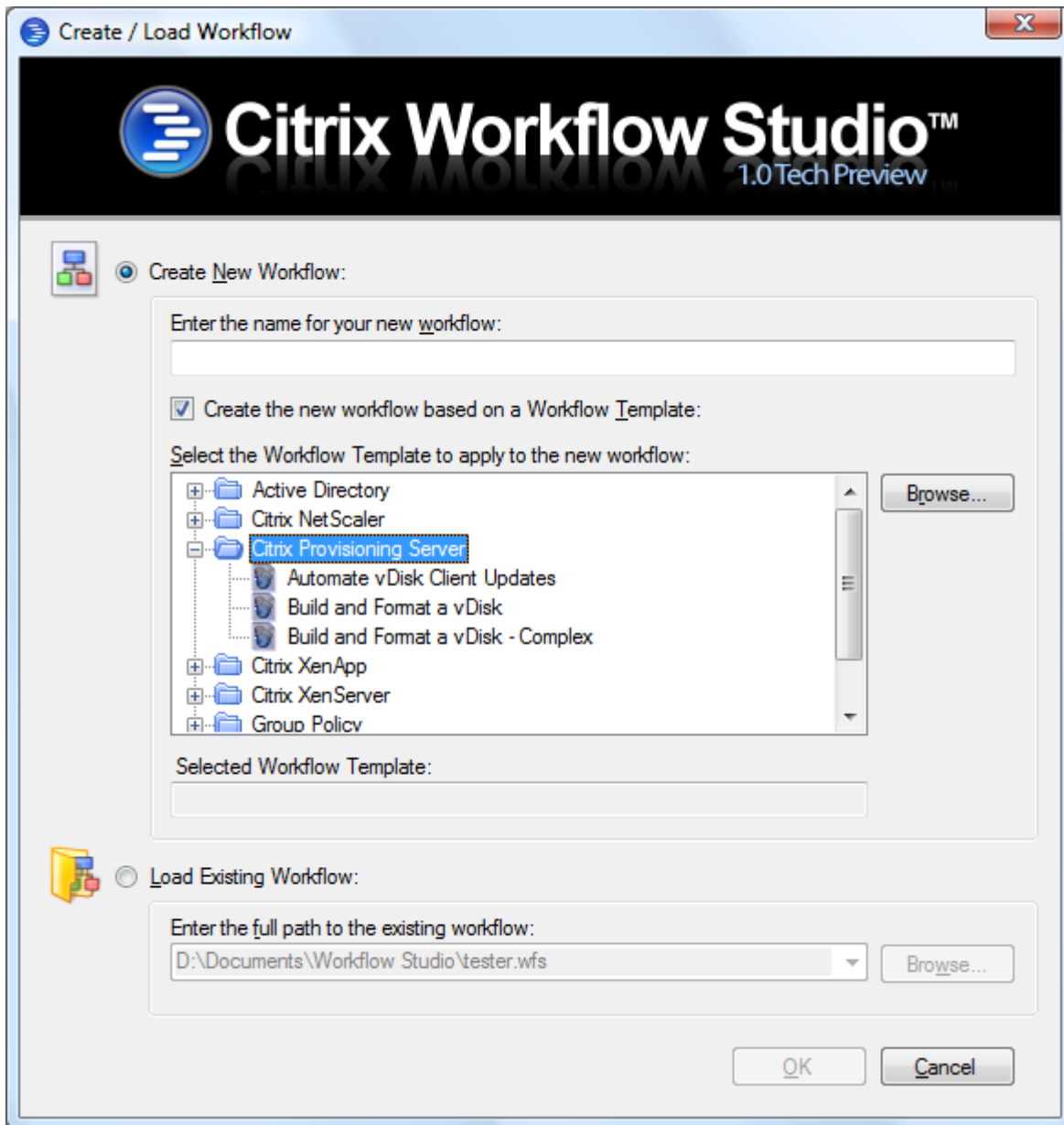
Workflow templates are pre-made workflows that are designed to give you an advanced start at creating workflows for some common scenarios. Some templates are meant for you to use to extend and customize for use in your environment while others are intended to be used primarily for learning purposes.

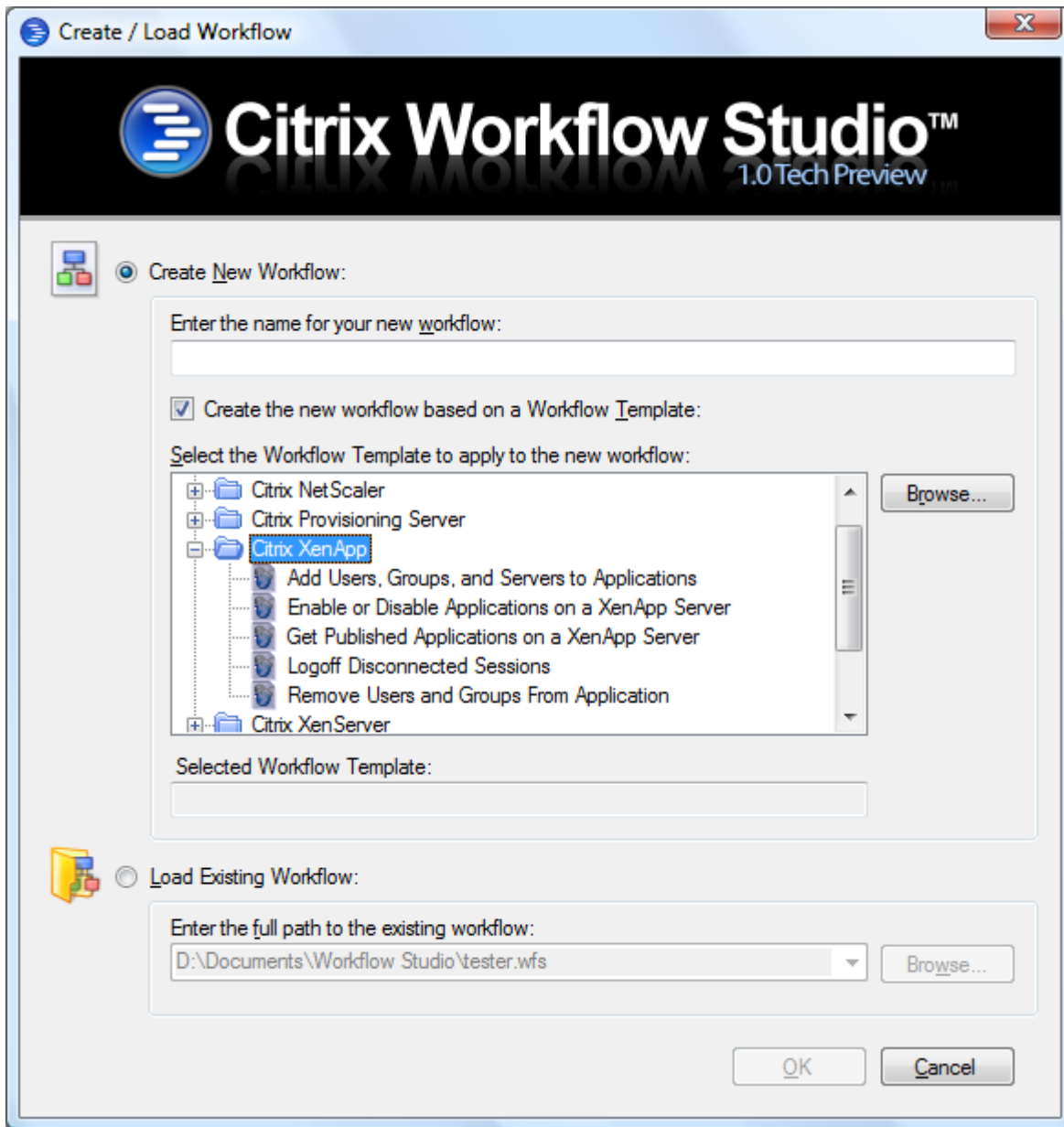
Workflow templates are only installed with the WFS console component and are installed in you're My Documents\Workflow Studio\Workflow Templates folder. You can change the default location for your templates in the Tools\Options dialog.

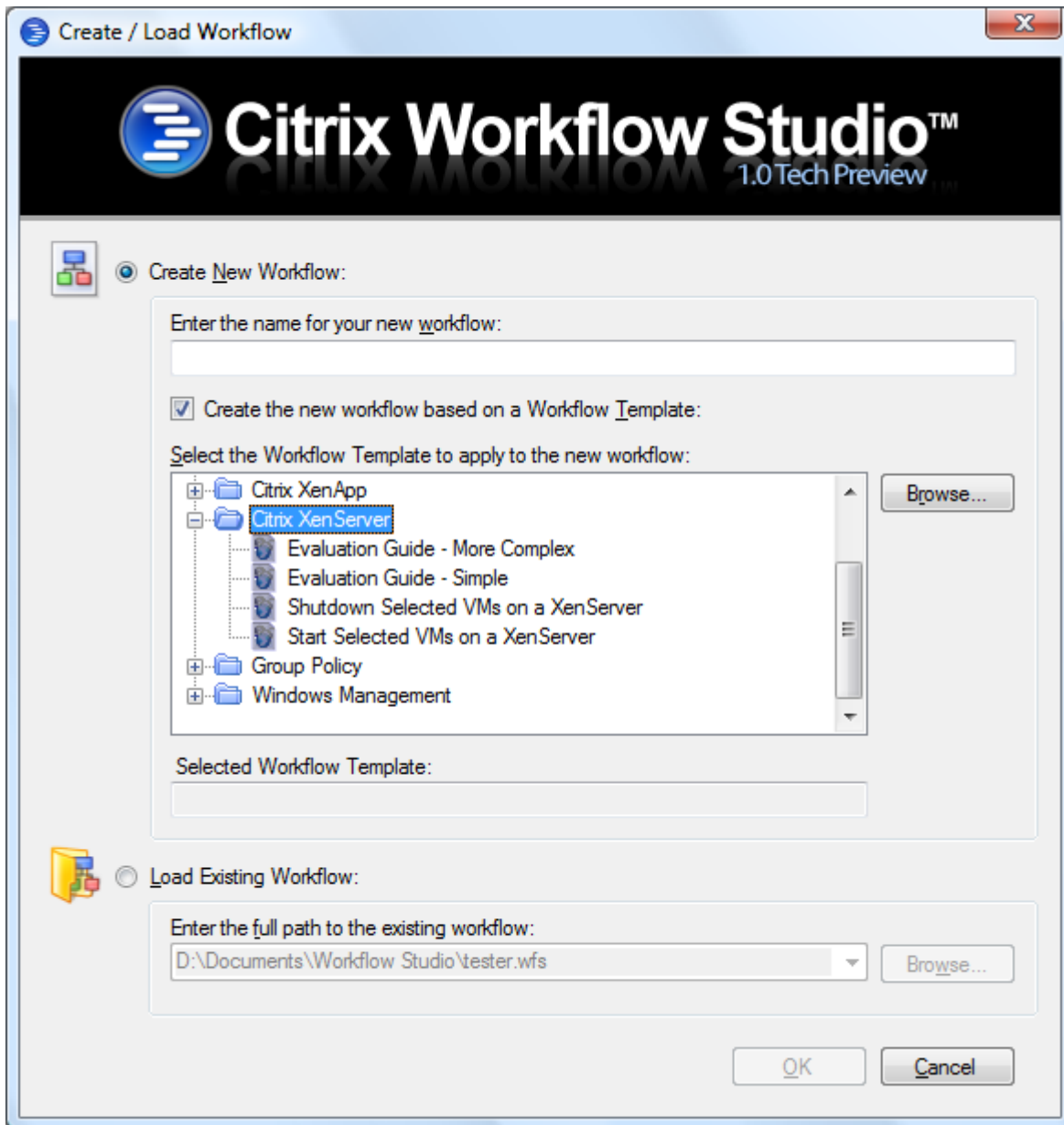
Here are some of the out of the box templates you can use in your workflows that have been added to the Citrix Workflow Studio Community Tech Preview that were not in the Partner Tech Preview or have been updated:

- Citrix NetScaler Templates
- Citrix Provisioning Server Templates
- Citrix XenApp Templates
- Citrix XenServer Templates









Conclusion

If you haven't read my Introduction to Citrix Workflow Studio series, I would suggest you do so, as this overview article is not intended to showcase the product and all of its features. It was intended to show what has changed since the Partner Tech Preview was released.

Work on Citrix Workflow Studio is ongoing, and the release of the Citrix Workflow Studio 1.0 Community Tech Preview is an example of the progress we have made in the product. I wish I could actually show how much more Citrix Workflow Studio is and will be. But don't worry; there will be future preview releases. We would love to hear your feedback on Citrix Workflow Studio, as this will help us make this product into something that will help you change how you manage everything.